

Make – Engineer to Order

Presented by Keir Davis – Nick Weber

OWNER – XTERN SOFTWARE
PRESIDENT, INNOVATIVE CONSULTING GROUP

Fourth Shift Summit
Sponsored by:



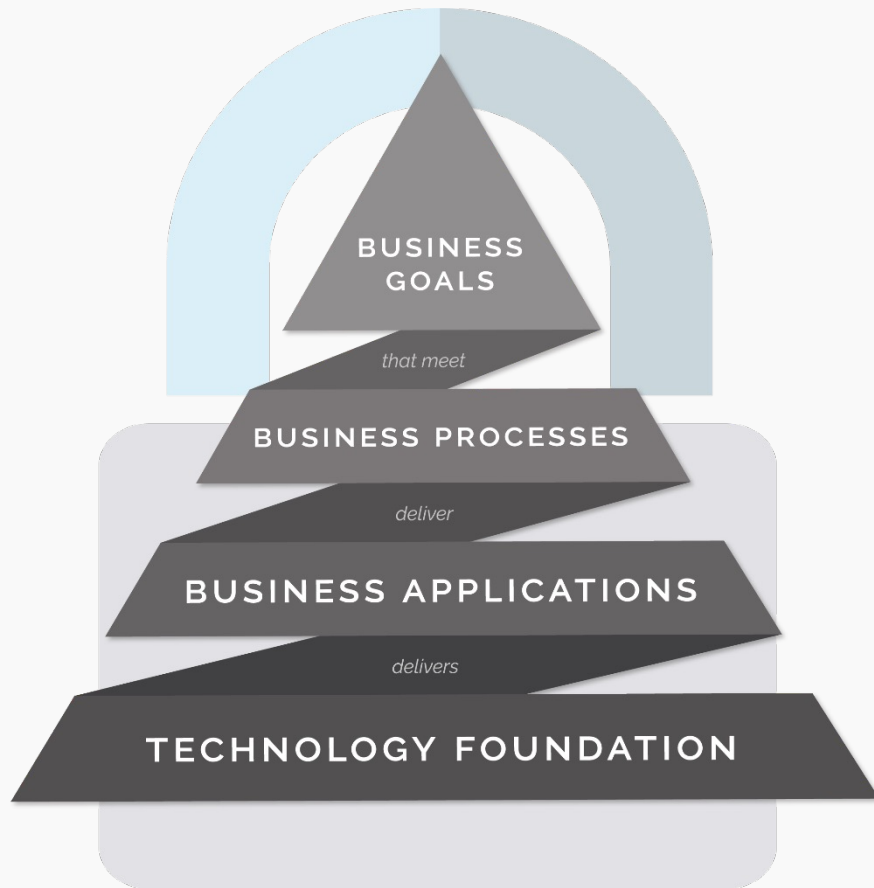


01 Introduction

02 Option Assistant

03 Engineering Module

04 Workflow



The ICG Approach

To compete, technology must be core to the foundation of your business. Without a solid & flexible technology foundation, your business—no matter what you do—will struggle to deliver business applications & processes. ICG's approach is to architect a secure technology foundation that delivers all business applications & processes. This is referred to as perpetual evolution and allows businesses to continually upgrade their digital capabilities and the foundation underneath them.

Introduction

01

Keir Davis


Owner - Xtern Software

02

Nick Weber

President Innovative Consulting Group





Options Assistant

Parametric Configurator

Comprehensive Development Environment

Directly Integrates With CPMT and BILL

Desktop Client and Web Integration



Product Configuration



Easy Product Configuration

Users simply answer questions



No More OPSL

Interactive and integrates directly with CPMT



CPMT or BILL

Generate order-dependent bills or standard bills



Capture Selections

Store selections in SQL for Analysis



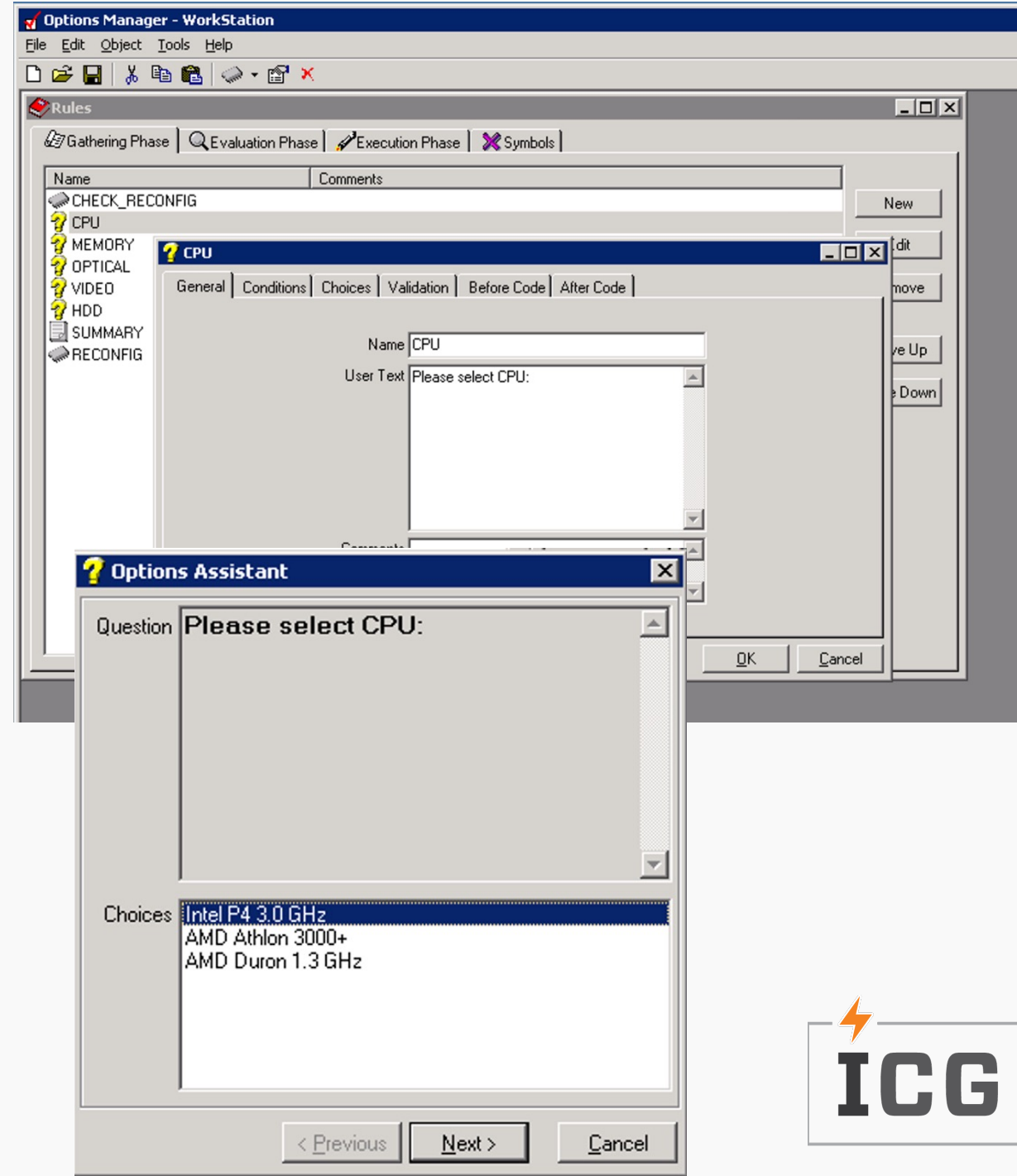


SKU Selection

User answers questions

System selects correct product

Live Look





Options Assistant

Walk Through

Fourth Shift Engineering Module

01 Engineer to Order

Product Introduction
Mass Maintenance

02 Make to Order

Revision Control

03 What if Scenarios

Costing
Prototyping





Main Sections of Module

Product Definition Engineering

- Engineering Item Master
- Engineering Bill of Materials
- Custom Fields

Product Definition Production

- Production Item Master
- Production Bill of Materials

Product Release Management

- Data Accuracy
- Data Control

Workflow Management

- ECR Process
- Non-Production processes

Engineering Data



Revision Control

Maintain Unique Items per Revision
Embed Revision Items into BOM



Custom User Defined Fields

Engineering Section Only



Mass Change

Mass Changes to Engineering Item Master



User Defined Views

Create Specific Views



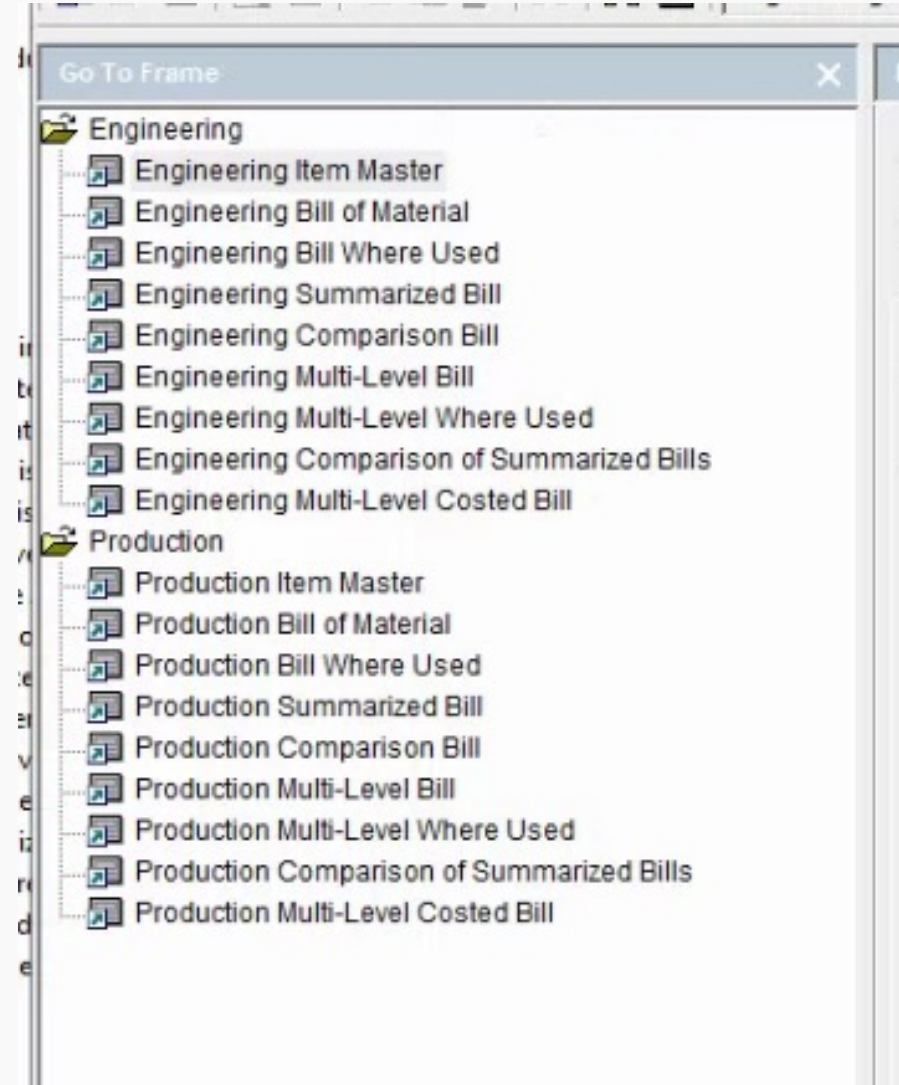
Data Import

.CSV Files

Engineering Data



Engineering Module Screens



Production Data



Maintain Data

Maintain Item Master
Maintain Bill of Materials



Mass Change

Mass Changes to Production or
Engineering Item Master



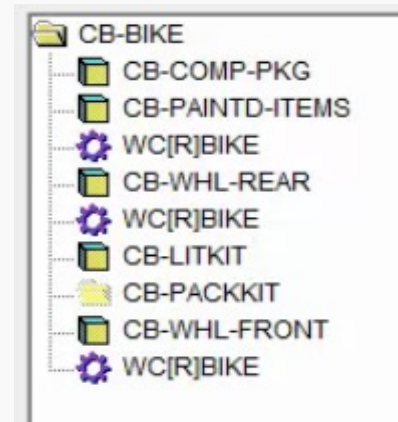
User Defined Views

Create Specific Views



Graphic Bill of Materials

Components have Graphic Icon



Product Release



Item Status

Engineering – Engineering Module Only
Pre-Production (E – status)
Production (A – status)



Promotions

Engineering to Pre-Production (E – status)
Pre-Production to Production (A –status)
Promote Multiple items



Promotion Rules

Attribute Validation
Pre-Production
Production

WorkFlow



Process Approvals

No paperwork sitting on someone's desk
Visibility in the process



Process Control

ECR
ECN
New Items



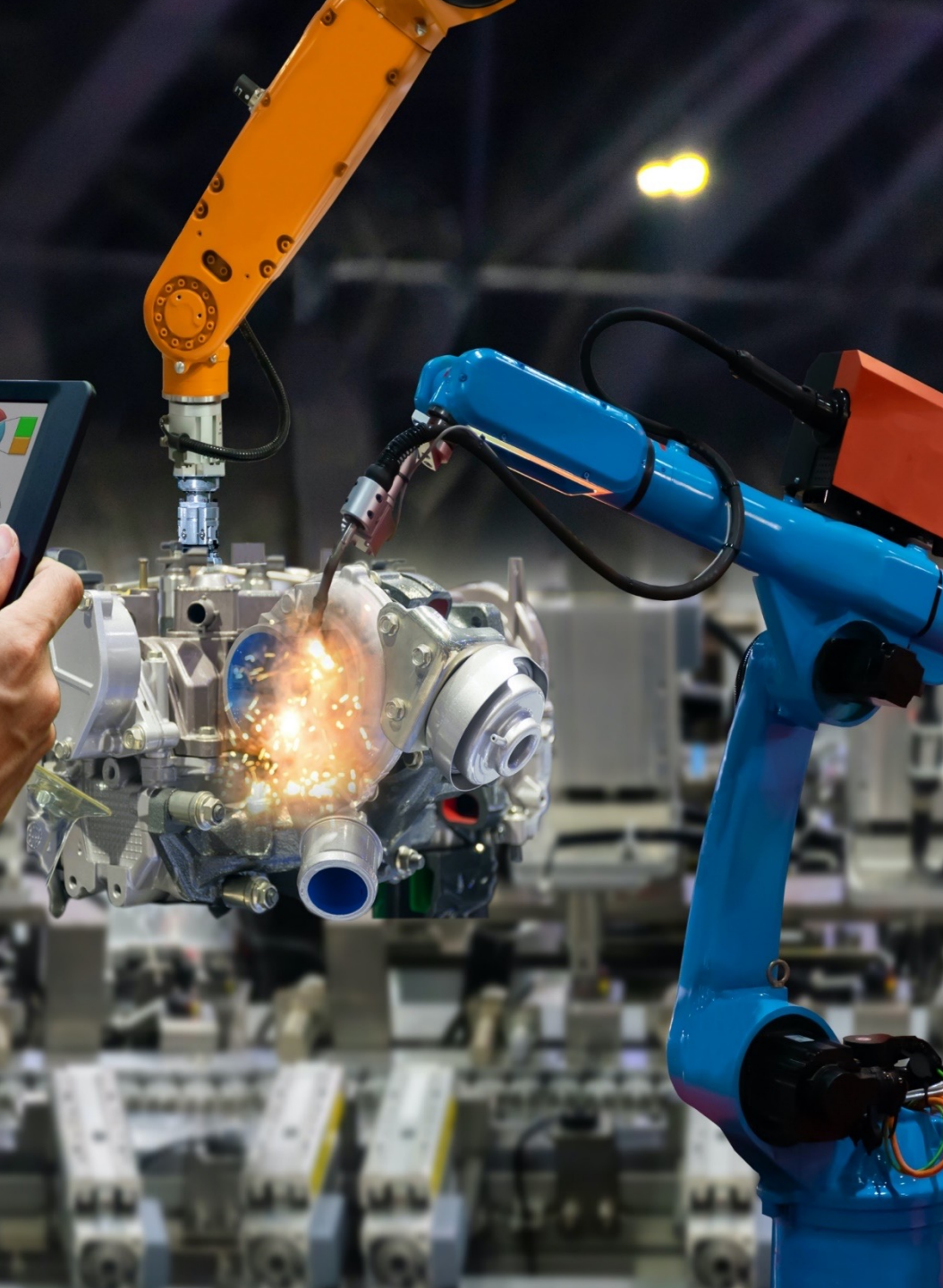
Notifications

Email Notification
Time constraints



Not just for your ERP

Purchase Requisition



Engineering Module

Walk Through

Questions?

Fourth Shift Summit
Sponsored by:

